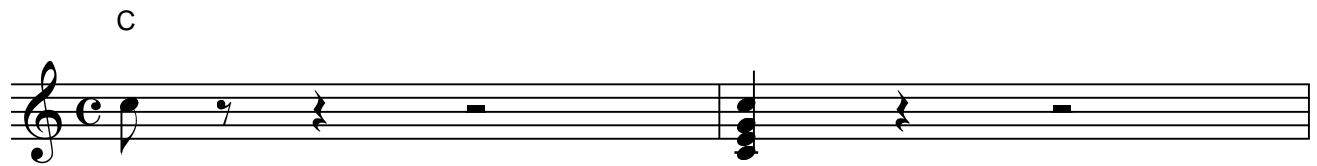


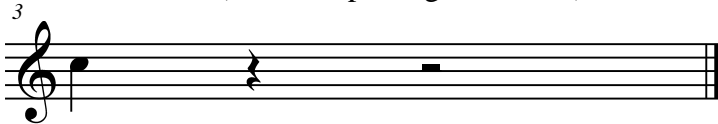
Finale2k3 Mac



Chord tool / chord menu / **enable ch.playback selected**

Result of: measure 1 selected (Mass Mover Tool), exp. to MIDI clipboard / measure 2 selected, import from MIDI clipboard. So: chord symbol MIDI information is stored as extra note information.

Result of import from MIDI clipboard when 'enable chord playback' in Chord Tool is **deselected** (before exporting, of course).



When you save a document as MIDI file, with 'enable ch.pl.b.' **selected**, you'll get after importing that file, a notation file structured as measure 2 of this document, which means that Finale apparently stores the MIDI information regarding the chord as extra notes in the same staff in a special chord layer, only visible as a symbol in the original file, but which only can be translated back as normal pitches in a new file, analogous to the above-mentioned situation **within** a document.

With 'enable pl.b.' **deselected** you get after exporting/importing a MIDI file indeed only the originally notated pitches.

I made and checked all this in Finale 2k3 Mac